

TORRE B-APP.L1

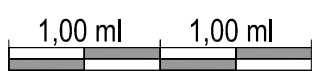
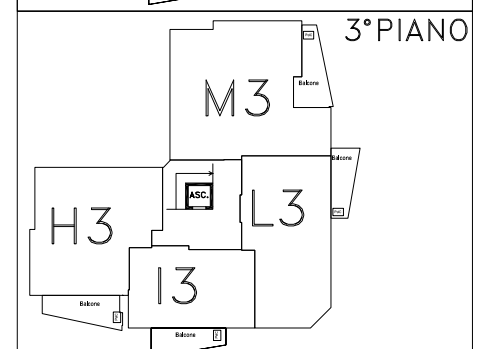
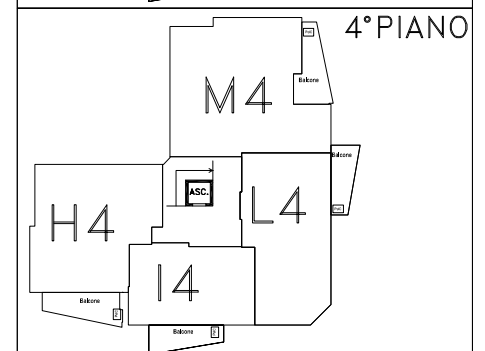
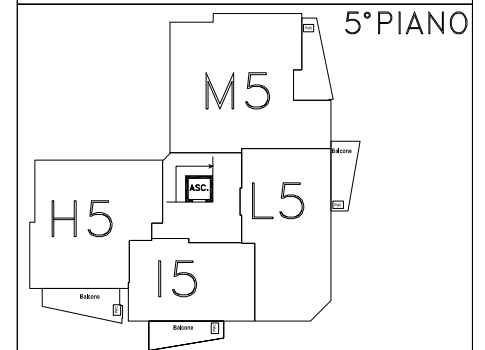
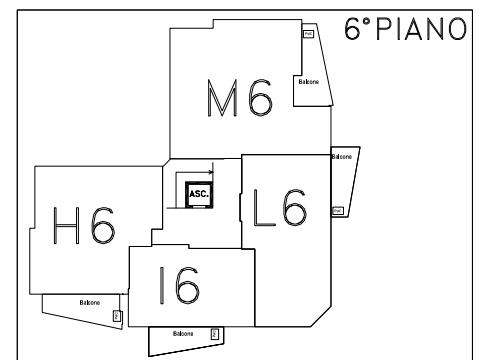
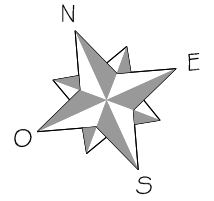
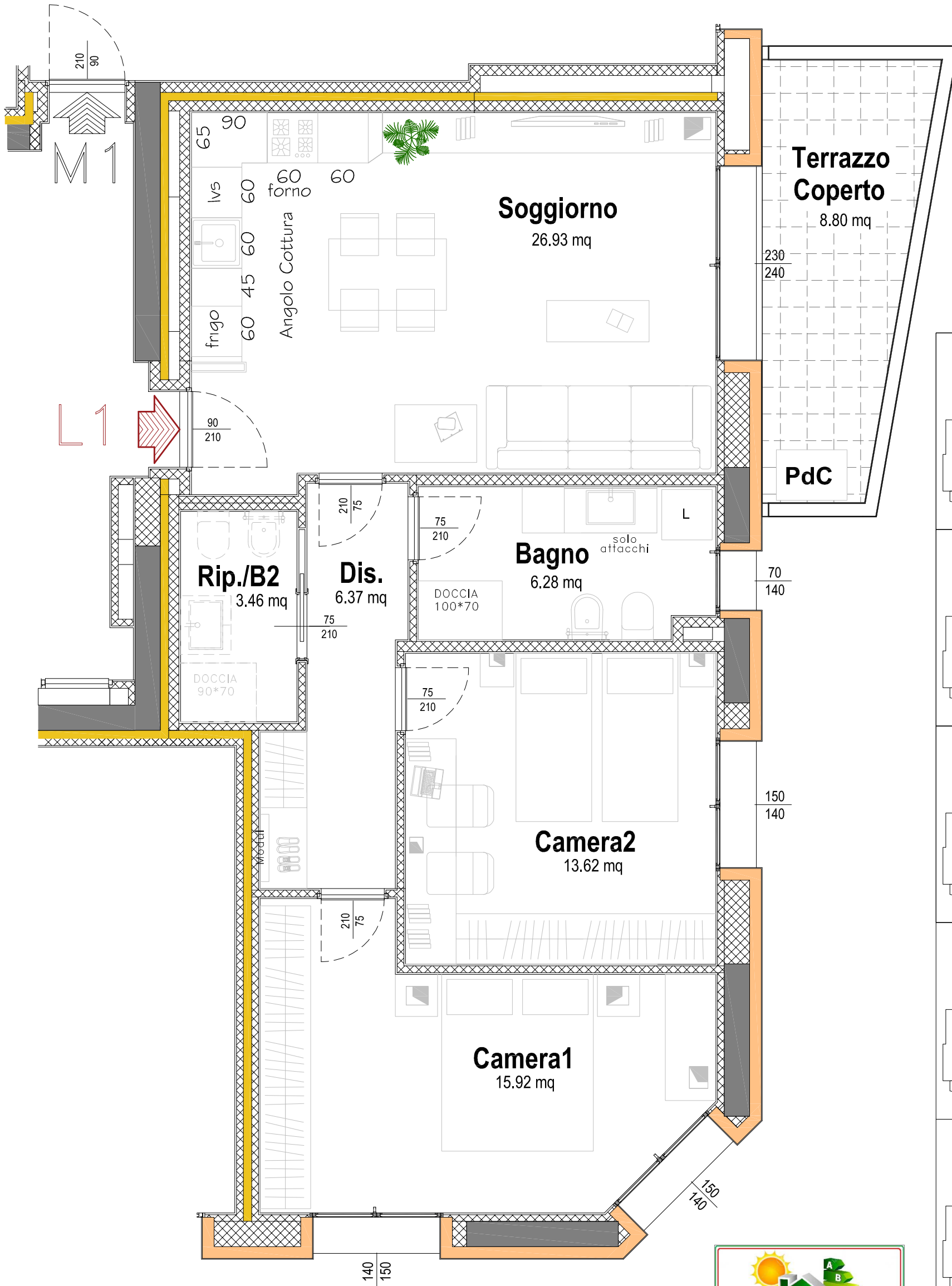
S.U. APPARTAMENTO=72.58MQ circa

COMUNE DI OZZANO DELL'EMILA (BO)

LE TORRI DI OZZANO [TORRE "B"]

Corso G. Garibaldi, s.n.c.

-PIANO PRIMO-



Le superfici rappresentate sono puramente indicative. Futura Costruzioni s.r.l. si riserva la facoltà di apportare in fase esecutiva piccole variazioni dovute a tolleranze pari al +/- 2% ed al dimensionamento di strutture portanti (pilastri), cavedi tecnici e/o condotti.

futura
costruzioni s.r.l.